



Basic Infection Control Skills License (BICSL)

BICSL Training of Trainer Course

الإدارة العامة لمكافحة عدوى المنشآت الصحية
General Directorate of Infection Prevention and Control

Basic Infection Control Skills License (BICSL)

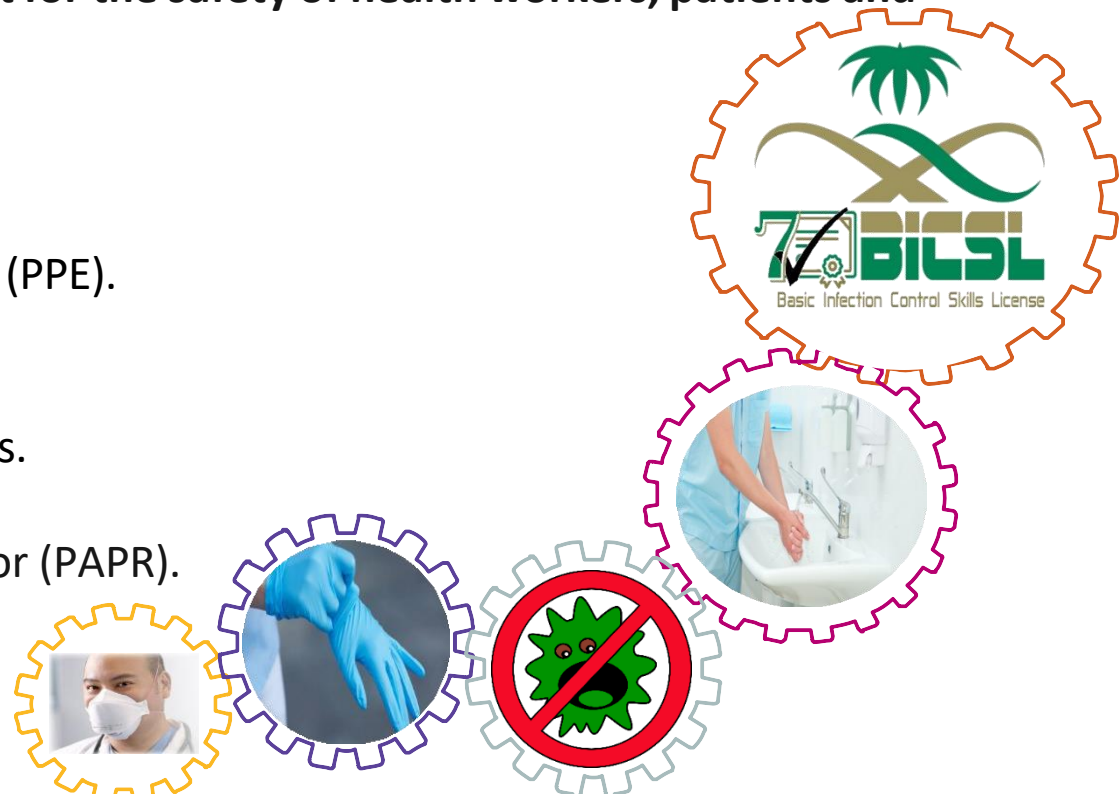
What is BICSL

BICSL stands for Basic Infection Control Skills License.

It is a licensing program providing basic skills in infection control for health practitioners to be applied at health facilities **to reduce the risk of transmission of infection and to create a safe working environment for the safety of health workers, patients and visitors.**

BICSL has (7) components:

1. Hand Hygiene (H.H).
2. Personal Protective Equipment (PPE).
3. Spill Kit.
4. Needle Stick Injury (NSI).
5. Transmission-Based Precautions.
6. Respirator Fit Testing.
7. Powered Air Purifying Respirator (PAPR).



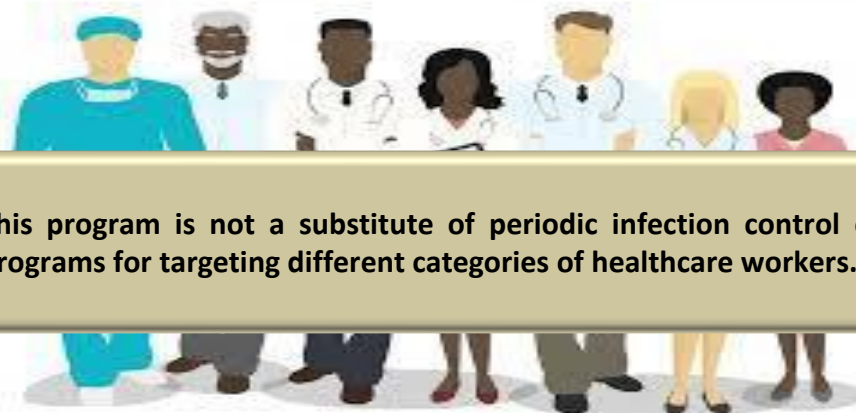
Basic Infection Control Skills License (BICSL)

Who should take it?

1. All health care workers who are assigned to work on hajj duty.
2. All health care workers who have direct or indirect contact with the patients in hospitals.
3. All health care workers who have direct or indirect contact with patients with confirmed or suspected respiratory infections in primary healthcare centers and other centers when recommended.



This program is not a substitute of periodic infection control educational programs for targeting different categories of healthcare workers.



Basic Infection Control Skills License (BICSL)

The duration of the license

- 2 years for the regional BICSL TOT (trained and licensed by (GDIPC BICSL team)
- 1 year for hospital BICSL trainer (trained by BICSL TOT)
- 1 year for participants **HCWs** (trained by hospital BICSL trainer)



Note:



The license of BICSL Trainers and Trainees becomes 2 Years based on the GDIPC rules based on the previous categories of healthcare workers.

Types of BICSL program certificates:

Only two types of certificates will be available for the program:

1. Trainer certificate

A certificate is given to BICSL trainers either in the Infection Control Directorate of Health Regions, Health Clusters, or Hospitals with different responsibilities as mentioned above. The certificate is given only when the trainer gets the passing score for both the theoretical exam and practical evaluation. The BICSL trainer certificate is **VALID FOR 2 YEARS.**

2. Trainee Certificate:

It is called **BICSL License Certificate with 2 YEARS VALIDITY** given to all healthcare workers in the health care facility according to the above-mentioned categories, also, required for all students and volunteers after passing all the license's requirements and achieving the learning objectives of the program.



Roles and responsibilities of the BICSL Program:

Roles of the General Directorate of Infection Prevention and Control – (BICSL Team of GDIPC):

Roles of Infection & Prevention Department in Regional Health Directorate (RHDs)- (BICSL Supervisors at RHDs):

Roles of Infection & Control Department in Health Clusters (HCs) - (BICSL Coordinators at HCs):

Roles of the Infection Prevention and Control Department of health facilities (BICSL Trainers in Health care facilities):



Basic Infection Control Skills License (BICSL)

Roles and responsibilities of the BICSL Program:

The GDIPC is responsible for:

- a. Management of the whole BICSL Program.
- b. Developing and updating BICSL training policies and regulations.
- c. Evaluation and certification of BICSL trainers in in the infection Control Directorates of the Health Regions.
- d. Implementation of audit visits to assess the training quality and find the weakness and areas of improvement.
- e. Development and updating operational indicators to evaluate the quality of the program.
- f. Announcement and preparation of the BICSL theoretical Examinations.
- g. Follow up the process of certification of BICSL trainers.



Basic Infection Control Skills License (BICSL)

Roles and responsibilities of the BICSL Program:

Roles of the Infection Prevention and Control directorate of health regions- (BICSL trainers of infection prevention and control directorate):

- a. Evaluation and certification of BICSL trainers in in the infection Control Departments of health clusters/ health care facilities.
- b. Evaluation of quality of training offered by certified BICSL trainers in the health clusters and health care facilities.
- c. Follow up of BICSL training coverage rate in health care facilities.
- d. Updating the data of certified BICSL trainers in Health care facilities based on GDIPC requirements.



Basic Infection Control Skills License (BICSL)

Roles and responsibilities of the BICSL Program:

Roles of the Infection Prevention and Control Department of health clusters (BICSL Trainers of Health Clusters):

- a. Preparation and training of new BICSL trainers in the health care facilities.
- b. Sharing in evaluation of quality of training offered by certified BICSL trainers in the health care facilities.
- c. Up the process of certification of BICSL trainers.



Basic Infection Control Skills License (BICSL)

Roles and responsibilities of the BICSL Program:

Roles of the Infection Prevention and Control Department of health facilities (BICSL Trainers of Health care facilities):

- a. The Facility's BICSL trainer is responsible for all BICSL training and licenses that were given to health care workers in his facility and ensuring that the license is granted only to the health care workers who are competent with all the training requirements.
- b. Entering the data of all trained HCWs on electronic system and issuing the BICSL cards for the trained staff with **TWO years validity.**
- c. Establish a mechanism for follow up the validity and expiry date of BICSL licenses of staff.
- d. Prepare the educational materials based on approved MOH guidelines and schedule the staff for initial training and annually.
- e. Ensure the BICSL card is visible and hung during the working day as it is required in his facility.

Minimum number of BICSL Trainers in each health care facilities & Medical cities:

The number of BICSL trainers in the facilities to achieve the program's requirements depend on the bed capacity as following:

Bed capacity	Required number of BICSL trainers
50 bed or less	2 trainers
51- 150 bed	3 trainers
151- 250 bed	4 trainers
251- 350 bed	5 trainers
351- 450 bed	6 trainers
451- 550 bed	7 trainers
≥ 550 bed	10 trainers

Certification process of BICSL trainers at different levels

Register for theoretical exam



Sharing the results of theoretical exam



Pass the practical evaluation



Create an account in Seha Platform by GDIPC



Requirements for BICSL trainer certification:

1. The candidate should get a required score for the theoretical exam.
2. Achieve a required score for Practical exam conducted by BICSL trainers of infection control directorate of health region.

وزارة الصحة
Ministry of Health

شهادة مدرب

تشهد إدارة مكافحة عدوى المنشآت الصحية بالمديرية/ بالتجمع الصحي بأن:

[Redacted]

قد حضر دورة بعنوان:

إعداد مدربين برنامج رخصة المهارات الأساسية في مكافحة العدوى (BICSL)

واجتاز متطلبات التقييم وتم اعتماده كمدرّب للبرنامج بالمنشأة الصحية: [Redacted]

لمده [Redacted] ابتداء من 26/03/2023

مدير إدارة مكافحة عدوى المنشآت الصحية بصحة منطقة [Redacted]

يُسمح لحامل هذه الشهادة بتدريب العاملين الصحيين داخل منشأته فقط، وإلا فإنه سيتحمل كامل المسؤولية إذا قام بتدريب منشآت أخرى.

C-B0000108404-11

متدرب
رقم البطاقة
C-B0000121040-1

رخصة المهارات الأساسية في مكافحة العدوى (BICSL)

رقم الهوية/الاقامة [Redacted]

اسم الممارس الصحي [Redacted]

اسم المنشأة الصحية
المختبر الإقليمي [Redacted]

المعايير

- المتطلبات العامة ✓
- تعريف برنامج بكسل ✓
- تنظيف وتعقيم الأيدي ✓
- وسائل الحماية الشخصية ✓
- التعامل مع الإسكابات ✓
- الوخز بالإبر ✓
- احتياطات العزل ✓
- اختيار ملائمة الكمام وجهاز حوذة ✓
- تنقية الهواء والذي يعمل بالطاقة ✓

اسم المنشأة الصحية
المختبر الإقليمي [Redacted]

نوع المنشأة
مختبر طبي

تاريخ الانتهاء [Redacted]

حالة البطاقة
سارية

يُسمح لحامل هذه الشهادة بتدريب العاملين الصحيين داخل منشأته فقط، وإلا فإنه سيتحمل كامل المسؤولية إذا قام بتدريب منشآت أخرى.

Basic Infection Control Skills License (BICSL)

Roles and responsibilities of the BICSL Program:



Remember

-The BICSL Trainers of Health care facilities in the Hospital are authorized **ONLY** to train healthcare workers within his facility, and for any exception should be through GDIPC.

Basic Infection Control Skills License (BICSL)

BICSL Training Evaluation Tool

1. BICSL Trainer- Practical Evaluation Tool (F2023A)
2. Self-Assessment BICSL Training Virtual Audit tool (SA2023A)

F2023A



Basic Infection Control Skills License (BICSL)

BICSL Training – Practical Evaluation Tool

BICSL Trainer- Practical Evaluation Tool (F2023A)		Responding	
Date of Visit:		0	
Region		1	
City Name		2	
Hospital Name		3	
Bed Capacity		4	
Name of the EVALUATOR		5	
Contact Information of the EVALUATOR			
Name of the CANDIDATE		0	Matching Not
CANDIDATE Contact Information		1	Matching
		NA	Not Applicable

Criteria	Standard	Score (from 1 to 5)	Percentage (%)	Comments
Hand Hygiene (H.H)	The Trainer demonstrates correct hand hygiene practices and differentiates between 2 types of hand hygiene.		0%	
Personal Protective Equipment (PPE)	The trainer demonstrates correct use of different PPE (Donning& Doffing& Sequence & Disposal)		0%	
Spill kit	The trainer is familiar with the components of biological spill kit and demonstrates correct technique for dealing with biological spills.		0%	
Fit Test	N.B. The trainer is evaluated for competency with use for the fit test available in the facility either the Quantitative or the qualitative			
		Score (0.1-NA)		Comments
	General instructions			
	Quantitative Respirator Fit test			

نموذج التقييم العملي لمدرّب بيكسل (F2023A)		الاستجابة	
		0	
		1	
		2	
		3	
		4	
		5	

المنطقة	المدينة	اسم المستشفى	السعة السريرية	اسم المقيم	معلومات التواصل للمقيم	اسم المدرب	معلومات المدرب	تاريخ الزيارة

Criteria	Standard	درجة (من 0 إلى 5)	نسبة مئوية (%)	التعليقات
نظافة وتعقيم الأيدي	يقوم المدرب بالتطبيق العملي لعماريات نظافة وتعقيم الأيدي بطريقة صحيحة ويشرح بين الغسل بالأماء والصابون والتعقيم بالجل الكحول		0%	
وسائل الحماية الشخصية	يقوم المدرب بتوضيح الطريقة الصحيحة لاستخدام الواقيات الشخصية وتضمن (الإرتداء، الخلع، الترتيب الصحيح، مكان التخلص منها)		0%	
التعامل مع الاستكبات	يعرف المدرب محتويات عدة التعامل مع الاستكبات ويعرض كيفية التعامل مع الاستكبات البيولوجية بطريقة صحيحة		0%	
ملاحظة: يتم عمل التقييم لأحد نوعي اختبار ملائمة الكمام التنفسي عال الكفاءة				
اختبار ملائمة الكمام	تعليمات عامة	درجة (NA=0)		
		التعليقات		
اختبار ملائمة الكمام	اختبار الملائمة الكمي	يقوم المدرب بشرح خطوات اختبار ملائمة الكمام قبل بداية التدريب العملي		
		يتأكد المدرب من ملائمة المتدرب لاختبار الكفاءة (يقوم المدرب بالتأكد ان المتدرب لا يعاني من أي أمراض تنفسية قبل التدريب مع تعمية النموذج الصحي، وكذلك عدم وجود لحية)		
اختبار الملائمة النوعي	اختبار الملائمة النوعي	يقوم المدرب بتوصيل أجزاء الجهاز بطريقة صحيحة		
		يقوم المدرب بعمل الفحص البصري للجهاز قبل بدء جلسة التدريب		
اختبار الملائمة النوعي	اختبار الملائمة النوعي	يقوم المدرب بإدخال بيانات المتدرب والكمام على النظام بطريقة صحيحة		
		يقوم المدرب بإعداد الكمام وتوصيله بالجهاز بطريقة صحيحة		
اختبار الملائمة النوعي	اختبار الملائمة النوعي	يعرف المدرب خطوات الاختبار ويتابع جميع الخطوات حسب تعليمات البرنامج		
		يقوم المدرب بالطلب من المتدرب أن يتبع تعليمات البرنامج ويتابع المدرب خلال الاختبار		
اختبار الملائمة النوعي	اختبار الملائمة النوعي	يقوم المدرب قبل الاختبار من التأكد من عدم تناول المتدرب لأي طعام أو مشروبات أو التدخين أو تناول العلكة خلال 15 دقيقة قبل الاختبار		
		يتم تسجيل نتائج اختبار الحساسية والملائمة في نموذج الامال اختبار الحساسية الخاص		
اختبار الملائمة النوعي	اختبار الملائمة النوعي	يقوم المدرب بتجهيز كل من بخاخ اختبار الحساسية وبخاخ اختبار الملائمة بالمحلول المعطس لكل بخاخ والتأكد من عمله قبل بداية الاختبار		
		يطلب المدرب من المتدرب التزم مع خلل الم مع إخراج السنن للخارج وتذكرو من حين لأخر		



Basic Infection Control Skills License (BICSL)

BICSL Program components:

Criteria	Standard	Score (from 1 to 5)	Percentage (%)	Comments
Hand Hygiene (H.H)	The Trainer demonstrates correct hand hygiene practices and differentiate between 2 types of hand hygiene.	5	30%	
Personal Protective Equipment (PPE)	The trainer demonstrates correct use of different PPE (Donning& Doffing& Sequence &Disposal)	5	30%	
Spill Kit	The trainer is familiar with the components of biological spill kit and demonstrate correct technique for dealing with biological spills.	5	10%	



Self-Assessment BICSL Training Virtual Audit tool (SA2023A)

Region	
City Name	
Hospital Name	
Bed Capacity	
BICSL trainer Name	
BICSL trainer mobile number	
BICSL trainer email	
Participant information	
Evaluator name	
Date of Visit:	

Compliance Rate	
0	Non-compliant
1	Compliant
NA	Not Applicable

Criteria	Standard	Score	Comments	
General Requirements	Trainer clean their hands before starting the training session			
	Trainer ensure that participant not confirmed or suspected for any respiratory diseases			
	The trainer confirms that the participant fulfill all BICSL components before giving him the license			
		Overall 0 Percentage 0		
BICSL Program	Define what is BICSL program			
	Define what is BICSL program components			
	Explain the validity of BICSL license according to MOH regulations			
	Illustration link: https://youtube.com/watch?v=g7suFUDJ3w&feature=share	Overall 0 Percentage 0		
Hand Hygiene (H-H)	Define what is Hand Hygiene			
	Define what is H.H types and explain the difference between them			
	Explain the H.H 5 moments			
	Explain the H.H technique and duration			
	Demonstrate the H.H technique			
	Ask the participant to demonstrate hand hygiene practice and correct any mistakes during demonstration			
	Illustration link: https://youtube.com/watch?v=g7suFUDJ3w&feature=share	Overall 0 Percentage 0		
Personal Protective Equipment (PPE)	Define what is Personal protective equipment PPE			
	Gown	Explain gown use Indications		
		Explain and demonstrate gown proper donning		
		Explain and demonstrate gown proper doffing		
		Explain and demonstrate gown correct disposal		
	Surgical mask	Explain surgical mask use Indications		
		Explain and demonstrate surgical mask proper donning		
		Explain and demonstrate surgical mask proper doffing		

Respirator N95	Explain respirator use Indications			
	Explain and demonstrate respirator proper donning			
	Explain and demonstrate respirator proper doffing			
	Explain respirator reuse and extended use			
	Explain and demonstrate respirator correct disposal			
	Goggles	Explain goggles use Indications		
		Explain and demonstrate goggles proper donning		
		Explain and demonstrate goggles proper doffing		
		Explain and demonstrate goggles correct disposal		
	Face shield	Explain Face shield Indications		
		Explain and demonstrate Face shield proper donning		
		Explain and demonstrate Face shield proper doffing		
		Explain and demonstrate Face shield correct disposal		
	Gloves	Explain gloves use Indications		
		Explain and demonstrate proper donning of gloves		
Explain and demonstrate proper doffing of gloves				
Ask the participant to demonstrate correct PPE donning and doffing including sequence and disposal				
The trainer corrects any mistakes during demonstration and ask the participant to repeat several times until he/she apply the correct practice				
Illustration link	https://youtube.com/watch?v=g7suFUDJ3w&feature=share	Overall 0		
	http://omranhospital.net/wp-content/uploads/2020/05/manual-for-personal-protective-equipment-5.5.2020.pdf-1.pdf	Percentage 0		
Spill Kit	Explain the causes of biological spills in health care setting			
	The trainer explains the difference between types of spill kits			
	Explain the components of biological spill kits			
	Explain the types of PPE used in management of spills			
	Demonstrate spill kits technique			
	Ask the participant to demonstrate management of spills and correct any mistakes during demonstration			
	Illustration link: https://youtu.be/eluTuSWt5WQ	Overall 0		
	Illustration link: https://www.youtube.com/watch?v=zec7CvWB7Us	Percentage 0		
Needle Stick Injury (NSI)	Define what is needle stick injury and possible causes in health care setting			
	Explain the immediate measures for management of NSI according to the MOH or health facility' policy			
	Explain safe injection and how to prevent NSI			
	Explain the reporting process of NSI according to the health facility' policy			
	Explain the requirements for postexposure follow up according to the facility' policy and procedures			
		Illustration link: https://youtu.be/PEI9QmGErWs	Overall 0 Percentage 0	
Transmission-Based Precautions	Define what are Transmission-Based Precautions			
	Define what are categories of Transmission-Based Precautions			
	Explain the general instructions of isolation precautions for all health care workers, patients, and visitors			
	Explain the general instructions for environmental cleaning and disinfection			
	Explain patient-care equipment and instruments/devices uses for isolated patients			
	Explain indications of use			
	Explain patient placement			
Contact Precautions	Explain use of personal protective equipment			

Droplet	Explain patient transport			
	Explain contact precautions isolation sign			
	Explain indications of use			
	Explain patient placement			
	Explain use of personal protective equipment			
	Explain patient transport			
Airborne	Explain droplet precautions isolation sign			
	Explain indications of use			
	Explain patient placement			
	Explain use of personal protective equipment			
Illustration link	https://www.cdc.gov/infectioncontrol/guidelines/isolation/index.html	Overall	0	
	http://omranhospital.net/wp-content/uploads/2020/05/manual-for-personal-protective-equipment-5.5.2020.pdf-1.pdf	Percentage	0	
Quantitative Respirator Fit General Instructions	Explain fit test steps at the beginning of the session			
	Fill the required forms (Medical Assessment form, Fit test Completion form for qualitative fit test only)			
	Teach participants the correct methods for putting on and taking off the N95 respirator			
	Quantitative respirator Fit test is PREFERRED to be used if the 2 types of fit test kits are available in the facility			
	The trainer connects the parts of the equipment correctly according to the manufacture recommendation			
	The trainer performs the daily check of the equipment			
	The trainer enters the new personal and respirator data on the system			
	The trainer prepares the tested respirator correctly			
	The trainer is familiar with the testing process and follow up all test steps correctly			
	The trainer asks the test participants to follow the machine's instructions and observe the participant throughout all exercises.			
Illustration link	https://drive.google.com/file/d/1LoFaLN0IhbJ68sAmB7lcDrO_qedfIX1/view?usp=drivesdk	Overall	0	
	https://drive.google.com/file/d/1LldJh-VamXUxyT6HrleIFVrexShIgb/view?usp=drivesdk	Percentage	#DIV/0!	
Qualitative respirator Fit test Sensitivity Test	Confirm that the participant does not eat, drink (except water) and smoking or chew gum for 15 minutes before the test			
	Ask the test person to put on the hood and collar assembly without a respirator			
	The trainer test that the nebulizer is working before start			
	Instruct the participant at the beginning of the test to breathe through his/her mouth with tongue extended and remind him every now and then			
	Use Nebulizer #1 with Sensitivity Test Solution, inject the aerosol into the hood through the hole in the hood window., the nebulizer is held in an upright position with the nozzle directed away from the mouth and nose of the test person			
	Inject ten squeezes of the bulb, squeezes are done deeply and slowly			
	The trainer asks the participant to report at any time during the test if he/she can detect the sweet taste of the solution and remind him every now and then			
The trainer notes the number of squeezes as 10, once the test person reports the taste regardless of no. of squeezes (1- 10)				

Fit testing	The trainer injects an additional shot of 10 squeezes of the aerosol into the hood if not tasted in step 1, and noted as 20 once the test person reports the taste regardless of no. of squeezes (11-20)			
	If still not tasted, the trainer injects additional 10 squeezes, and noted as 30 once the test person reports the taste regardless of no. of squeezes (21-30)			
	The trainer writes the results of sensitivity test as no. of squeezes required for the participant to detect the taste as 10, or 20, or 30			
	Trainer remove the test hood, and give the test person instructions to rinse his/her mouth with water and wipe his/her face and wait for a few minutes to clear the taste from his/her mouth			
	The trainer asks the participant to don the respirator and perform a user seal check			
	Ask the participant to put on and position the test hood and breathe through his/her mouth with tongue extended and remind him every now and then			
	The test is done in upright position			
	The trainer use stopwatch to regulate the time required for each activities and time for additional squeezes			
	Use Nebulizer #2 with Fit Test Solution, inject the fit test aerosol using the same number of squeezes as required in the Sensitivity Test (10, 20, or 30). A minimum of ten squeezes is required			
	Fully collapsing and allowing the bulb to expand fully on each squeeze			
	The nebulizer must be held in an upright position to ensure aerosol generation with the nozzle directed away from the mouth and nose of the test person			
	Inject one-half the number of squeezes (5, 10, or 15) every 30 seconds for the duration of the fit test procedure			
	After the initial injection of aerosol, the trainer instructs the test person to do the following test exercises for 60 seconds each:			
	a. Normal breathing. b. Deep breathing. c. Turning head side to side. d. Moving head up and down. e. Talking. f. Bending over. g. Normal breathing.			
	The trainer asks the participant to report at any time during the test if he/she can detect the sweet taste of the solution and remind him every now and then.			
The trainer approves the type of tested respirator when all exercises are done without the participant detecting the sweet taste of the aerosol				
The trainer terminates the test at any time when the sweet taste of aerosol is detected by the test person				
The trainer waits 15 minutes before performing the sensitivity test again				
The trainer repeats the fit test with the same respirator after re-donning and readjusting				
The trainer repeats the test using different size or model of respirator if a second failure with the same respirator				
Disinfect Fit test Hoodie after each use				
Clean and disinfect the outside surface of the nebulizer nozzle that is inserted into the hood after each use				
Illustration link	https://multimedia.3m.com/mws/media/473960O/guide-to-using-the-3m-qualitative-fit-test-kits.pdf	Overall Percentage	0 #DIV/0!	
Powered Air Purifying Respirator (PAPR)	Define what is PAPR and indications of use			
	Demonstrate PAPR assembly and check for air flow and charging			
	Demonstrate the proper donning of the PAPR			
	Demonstrate the proper doffing of the PAPR and disassembly			
	Give instructions regarding cleaning and disinfections of the PAPR parts			
	The trainer should ask any non-fit participant to demonstrate correct PAPR donning and doffing and corrects any mistakes during demonstration			
Illustration link	https://youtu.be/FjhzT5cM8	Overall Percentage	0 #DIV/0!	
	https://youtu.be/FO06zrrz9Zl			
Total Score			0	
Percentage			0.00	

Basic Infection Control Skills License (BICSL)

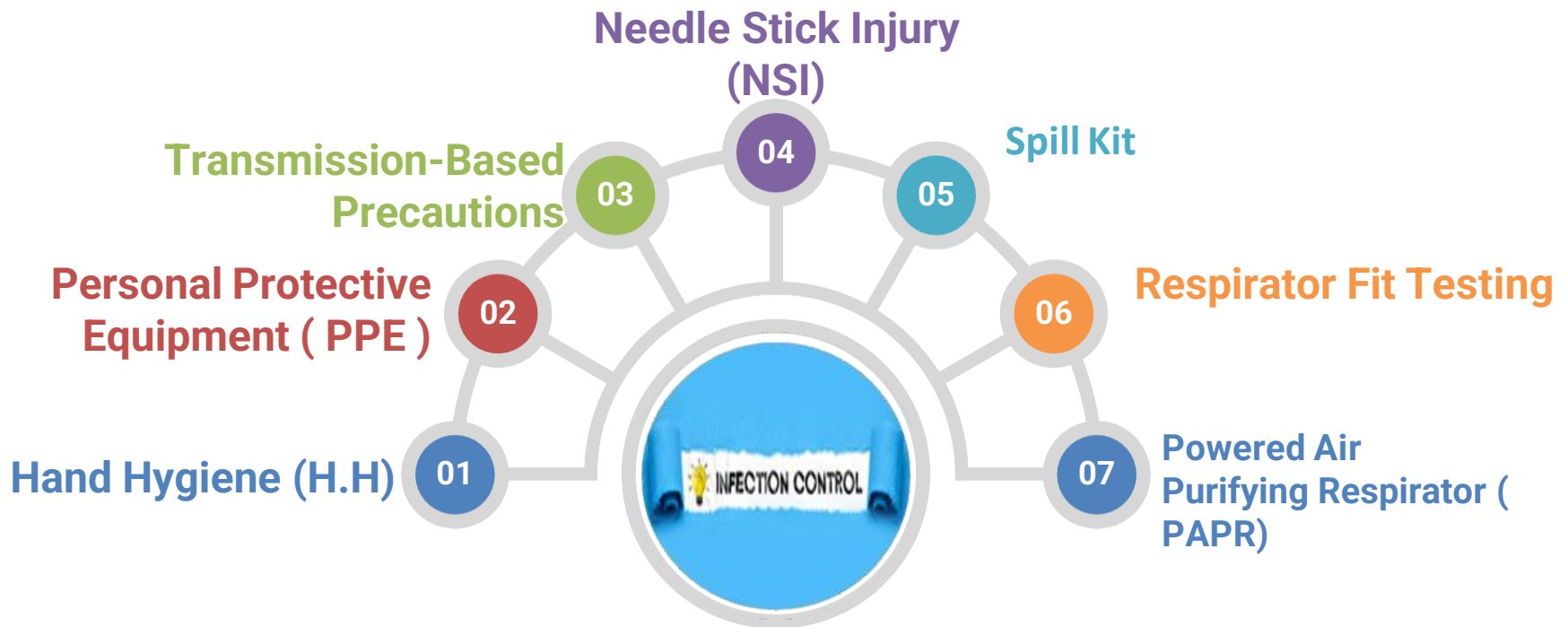
General Requirements for BICSL trainer:

1. Trainer clean their hands before starting the training session.
2. Trainer ensure that participant not confirmed or suspected for any respiratory disease.
3. The trainer confirms that the participant fulfil all BICSL components before giving him the license.



Elements of the Program

BICSL has 7 Components



Basic Infection Control Skills License (BICSL)

BICSL Program components:

1 Hand Hygiene (H.H)

1. Define what is Hand Hygiene.
2. Define what is H.H types and explain the difference between them.
3. Explain the H.H 5 moments.
4. Explain the H.H technique and duration.
5. Demonstrate the H.H technique.

Ask the participant to demonstrate hand hygiene practice and correct any mistakes during demonstration.



Basic Infection Control Skills License (BICSL)

BICSL Program components:

2- Personal Protective Equipment (PPE)



1. Define what is Personal protective equipment PPE.

Gown, Surgical mask, Respirator N95 mask, Goggles, Face shield and Gloves

2. Explain use Indications.

3. Explain and demonstrate proper donning.

4. Explain and demonstrate proper doffing .

5. Explain and demonstrate correct disposal.

6. Ask the participant to demonstrate correct PPE donning and doffing including sequence and disposal.

The trainer corrects any mistakes during demonstration and ask the participant to repeat several times until he/she apply the correct practice.



Basic Infection Control Skills License (BICSL)

BICSL Program components:

3- Spill Kit

1. Explain the causes of biological spills in health care setting.
2. The trainer explains the difference between types of spill kits.
3. Explain the components of biological spill kits.
4. Explain the types of PPE used in management of spills.
5. Demonstrate spill kits technique.

Ask the participant to demonstrate management of spills and correct any mistakes during demonstration **ONLY NON PHYSICIAN**



Basic Infection Control Skills License (BICSL)

BICSL Program components:

4- Needle Stick Injury (NSI)

1. Define what is needle stick injury and possible causes in health care setting.
2. Explain the immediate measures for management of NSI according to the MOH or health facility' policy.
3. Explain safe injection and how to prevent NSI.
4. Explain the reporting process of NSI according to the health facility' policy.
5. Explain the requirements for post exposure follow up according to the facility' policy and procedures.



Basic Infection Control Skills License (BICSL)

BICSL Program components:

5- Transmission-Based Precautions :

Contact Precautions, Droplet Precautions and Airborne Precautions

1. Define what are Transmission-Based Precautions.
2. Define what are categories of Transmission-Based Precautions.
3. Explain the general instructions of isolation precautions for all health care workers, patients, and visitor.
4. Explain the general instructions for environmental cleaning and disinfection.
5. Explain patient-care equipment and instruments/devices uses for isolated patients.





إحتياطات العزل التلامسي CONTACT PRECAUTIONS

يجب على الزوار مراجعة مكتب التمريض قبل الزيارة
VISITORS : Report to nurse's station before entering the room

All HCWs and visitors
must do the following:

على جميع الممارسين
الصحيين و الزوار اتباع التالي:

before patient room or care
area entry :

- 1- Practice hand hygiene .
- 2- Wear isolation gown and gloves.

قبل دخول الغرفة او منطقة
المريض:

- 1- ممارسة نظافة الايدي.
- 2- ارتداء مريبول العزل و القفازات .



before exit from patient room
or care area :

- 1- Remove gown and gloves
and discard based on the medical
waste policy.
- 2- Practice hand hygiene .

قبل الخروج من غرفة المريض أو
منطقة المريض:

- 1- يتم خلع مريبول العزل و القفازات
والتخلص منها بناءً على سياسة
النفايات الطبية.
- 2- ممارسة نظافة الايدي.

TRANSPORTATION CARD العزل التلامسي CONTACT PRECAUTIONS

- 1 > إبلاغ القسم المستلم (التشخيص - نوع العزل).
Notify the receiving unit/ward/department
(Diagnosis, Type of Isolation Precautions).
 - 2 > يتم تحضير المريض للنقل كما يلي:
تغطية جروح المريض بضماد غير منفذ للسوائل.
إزداء المريض بزئاد طبي نظيف.
تغطية المريبي بمعالجة نظيفة.
يجب على الممارس الصحي إزداء القفازات النظيفة
ولرعا بعد الإلتقاء من نقل المريبي وممارسة
تطهير الأيدي.
 - 3 > يجب على الممارس الصحي تطهير السرير/
الكريسي المتحرك المستخدم لنقل المريبي
بعد النقل باستخدام المطهرات المعتمدة
بوزارة الصحة.
- Use clean gloves



احتياطات العزل الرذاذي DROPLET PRECAUTIONS

يجب على الزوار مراجعة مكتب التمريض قبل الزيارة
VISITORS : Report to nurse's station before entering the room

All HCWs and visitors
must do the following:

على جميع الممارسين
المصحين و الزوار اتباع التالي:

before patient room or care area
entry :

- 1- Practice hand hygiene .
- 2- Wear a surgical Mask .



قبل دخول الغرفة أو منطقة
المريض:

- 1- ممارسة نظافة الأيدي.
- 2- ارتداء الكمام الجراحي العادي.

before exit from patient room or
care area :

- 1- Surgical Mask must be removed and discarded based on the medical waste policy.
- 2- Practice hand hygiene .

قبل الخروج من غرفة المريض أو
منطقة المريض:

- 1- يتم خلع الكمام الجراحي العادي والتخلص منها بناءً على سياسة النفايات الطبية.
- 2- ممارسة نظافة الأيدي.

TRANSPORTATION CARD

DROPLET PRECAUTIONS العزل الرذاذي

1 > Notify the receiving unit/ward/department
(Diagnosis, Type of Isolation Precautions).

2 > Prepare the patient for transportation :

- Patient should wear a surgical mask.
- Educate the patient about respiratory hygiene (Cough Etiquette).
- HCW should perform hand hygiene after patient transport.

3 > If the patient can not tolerate wearing a surgical mask, HCW should wear a surgical mask during transportation.

4 > Staff should disinfect the patient bed/ wheeled chair using MOH approved disinfectant.



Use surgical or medical masks

1 < إبلاغ القسم المسلم (التشخيص - نوع العزل).

2 < يجب أن يتم تحضير المريض للنقل كما يلي:

- أن يستخدم المريض الكمام الجراحي العادي أثناء نقله.
- تليف المريض عن العناية الشخصية (أداب السعال).
- يجب على الممارس الصحي ممارسة نظافة الأيدي بعد الإلتقاء من نقل المريض.

3 < يجب على الممارس الصحي استخدام الكمام الجراحي العادي أثناء عملية النقل في حاله عدم امكانية ارتداء المريض لكمام الجراحي الطبي العادي.

4 < يجب على الممارس الصحي تطهير السرير أو الكرسي المتحرك المستخدم لنقل المريض بعد النقل باستخدام المطهرات المعتمدة في وزارة الصحة.



احتياطات العزل الهوائي AIRBORNE PRECAUTIONS

يجب على الزوار مراجعة مكتب التمريض قبل الزيارة
VISITORS : Report to nurse's station before entering the room

All HCWs and visitors
must do the following:

Before patient room entry :
1- Practice hand hygiene .
2- Wear N95 respirator .

Before exit from patient room :
1- All personal protective equipment
must be removed except N95
respirator and discarded based
on the medical waste policy.

After exit from patient room :
1- Remove N95 respirator and
discard based on the medical waste policy.
2- Practice hand hygiene .



على جميع الممارسين
الصحيين و الزوار اتباع التالي:

قبل دخول الغرفة :
1- ممارسة نظافة الايدي.
2- ارتداء الكمام التنفسي عالي الكفاءة .

قبل الخروج من غرفة المريض :
1- يتم خلع مستلزمات الوقاية
الشخصية ماعدا الكمام التنفسي
عالي الكفاءة والتخلص منها بناءً
على سياسة النفايات الطبية.

بعد الخروج من غرفة المريض :
1- يتم خلع الكمام التنفسي عالي الكفاءة
والتخلص منها بناءً على سياسة النفايات الطبية.
2- ممارسة نظافة الايدي.

TRANSPORTATION CARD العزل الهوائي AIRBORNE PRECAUTIONS

1 > Notify the receiving unit/ward/department
(Diagnosis, Type of Isolation Precautions).



2 > Prepare the patient for transportation :

- Patient should wear surgical mask.
- Educate the patient about respiratory hygiene
(Cough Etiquette).
- HCW should perform hand hygiene after patient
transport.



3 > If the patient can not tolerate wearing a
surgical mask, during transportation
healthcare workers should wear the fitted
N95 respirator.



4 > Staff should disinfect the patient bed/
wheeled chair using MOH approved
disinfectant.



Use N95 respirator

1 < إبلاغ القسم المسلم (التشخيص - نوع العزل) .

2 < يجب أن يتم تحضير المريض للنقل كما يلي:
• أن يستخدم المريض الكمام الجراحي العادي أثناء نقله.
• تليف المريض عن العناية التنفسية (آداب السعال) .
• يجب على الممارس الصحي ممارسة نظافة الأيدي بعد
الإنهاء من نقل المريض .

3 < في حال عدم إمكانية ارتداء المريض للكمام
الجراحي الطبي العادي يجب على الممارس
الصحي استخدام الكمام التنفسي عالي
الكفاءة (N95) أثناء عملية النقل .

4 < يجب على الممارس الصحي تحضير السرير أو
الكروسي المتحرك المستخدم لنقل المريض بعد
النقل باستخدام المطهرات المعتمدة في وزارة
الصحة.

Basic Infection Control Skills License (BICSL)

BICSL Program components:

6- Fit Test

Qualitative and Quantitative Fit Testing



General requirements:

1. Explain fit test steps at the beginning of the session.
2. Fill the required forms (Medical Assessment form, Fit test Completion form for qualitative fit test only).
3. Teach participants the correct methods for putting on and taking off the N95 respirator.
4. **Quantitative respirator Fit test is PREFERRED to be used if the 2 types of fit test kits are available in the facility.**



Basic Infection Control Skills License (BICSL)

BICSL Program components:

6- Fit Test

Quantitative Fit Testing

1. The trainer connects the parts of the equipment correctly according to the manufacture recommendation.
2. The trainer performs the daily check of the equipment.
3. The trainer enters the new personal and respirator data on the system.
4. The trainer prepares the tested respirator correctly.
5. The trainer is familiar with the testing process and follow up all test steps correctly.
6. The trainer asks the test participants to follow the machine's instructions and observe the participant throughout all exercises.



Basic Infection Control Skills License (BICSL)

BICSL Program components:

6- Fit Test

MOH provides 2 new Quantitative Fit Testing Devices



PortaCount •

AccuFit 9000 Pro •



Basic Infection Control Skills License (BICSL)

BICSL Program components:

6- Fit Test

Qualitative Fit Testing

Sensitivity Test:

1. Confirm that the participant does not eat, drink (except water) and smoking or chew gum for 15 minutes before the test
2. Ask the test person to put on the hood and collar assembly without a respirator
3. The trainer test that the nebulizer is working before start
4. Instruct the participant at the beginning of the test to breathe through his/her mouth with tongue extended and remind him every now and then



Basic Infection Control Skills License (BICSL)

BICSL Program components:

6- Fit Test

Qualitative Fit Testing

Sensitivity Test:

5. Use Nebulizer #1 with Sensitivity Test Solution, inject the aerosol into the hood through the hole in the hood window., the nebulizer is held in an upright position with the nozzle directed away from the mouth and nose of the test person.
6. Inject ten squeezes of the bulb, squeezes are done deeply and slowly.
7. The trainer asks the participant to report at any time during the test if he/she can detect the sweet taste of the solution and remind him every now and then.
8. The trainer notes the number of squeezes as 10, once the test person reports the taste regardless of no. of squeezes (1- 10).



Basic Infection Control Skills License (BICSL)

BICSL Program components:

6- Fit Test

Qualitative Fit Testing

Sensitivity Test:

9. The trainer injects an additional shot of 10 squeezes of the aerosol into the hood If not tasted in step 1, and noted as 20 once the test person reports the taste regardless of no. of squeezes (11-20).
10. If still not tasted, the trainer injects additional 10 squeezes, and noted as 30 once the test person reports the taste regardless of no. of squeezes (21-30).
11. The trainer writes the results of sensitivity test as no. of squeezes required for the participant to detect the taste as 10, or 20, or 30.



Basic Infection Control Skills License (BICSL)

BICSL Program components:

6- Fit Test

Qualitative Fit Testing

Sensitivity Test:

12. Trainer remove the test hood, and give the test person instructions to rinse his/her mouth with water and wipe his/her face and wait for a few minutes to clear the taste from his/her mouth.
13. The trainer terminates the test at any time when the sweet taste of aerosol is detected by the test person.
14. The trainer waits 15 minutes before performing the sensitivity test again.
15. The trainer repeats the fit test with the same respirator after re-donning and readjusting.
16. The trainer repeats the test using different size or model of respirator If a second failure with the same respirator.



Basic Infection Control Skills License (BICSL)

BICSL Program components:

6- Fit Test

Qualitative Fit Testing

Fit Test:

1. The trainer asks the participant to don the respirator and perform a user seal check
2. Ask the participant to put on and position the test hood and breathe through his/her mouth with tongue extended and remind him every now and then
3. The test is done in upright position
4. The trainer use stopwatch to regulate the time required for each activities and time for additional squeezes
5. Use Nebulizer #2 with Fit Test Solution, inject the fit test aerosol using the same number of squeezes as required in the Sensitivity Test (10, 20, or 30). A minimum of ten squeezes is required



Basic Infection Control Skills License (BICSL)

BICSL Program components:

6- Fit Test

Qualitative Fit Testing

Fit Test:

6. Fully collapsing and allowing the bulb to expand fully on each squeeze
7. The nebulizer must be held in an upright position to ensure aerosol generation with the nozzle directed away from the mouth and nose of the test person
8. Inject one-half the number of squeezes (5, 10, or 15) every 30 seconds for the duration of the fit test procedure



Basic Infection Control Skills License (BICSL)

BICSL Program components:

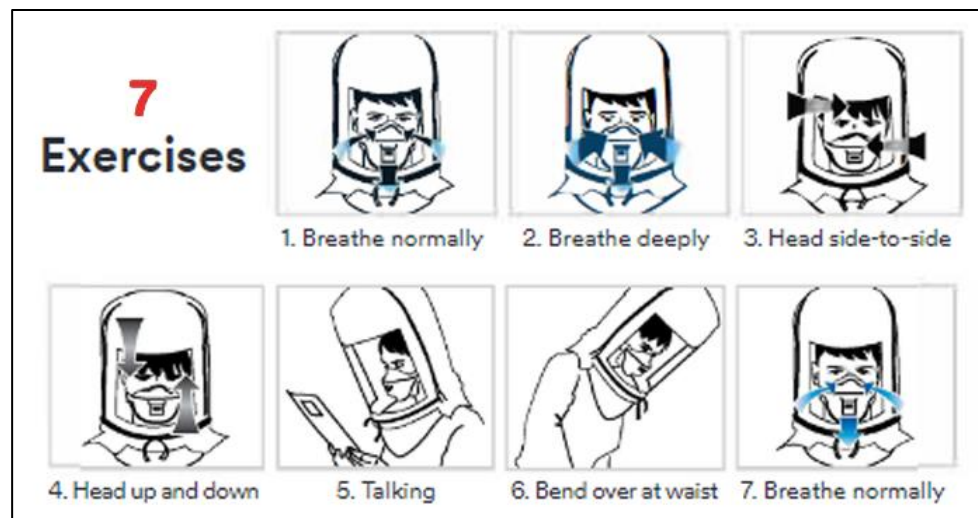
6- Fit Test

Qualitative Fit Testing

Fit Test:

9. After the initial injection of aerosol, the trainer instructs the test person to do the following test exercises for 60 seconds each:

- Normal breathing.
- Deep breathing.
- Turning head side to side.
- Moving head up and down.
- Talking.
- Bending over.
- Normal breathing.



Basic Infection Control Skills License (BICSL)

BICSL Program components:

6- Fit Test

Qualitative Fit Testing

Fit Test:

10. The trainer asks the participant to report at any time during the test if he/she can detect the sweet taste of the solution and remind him every now and then.
11. The trainer approves the type of tested respirator when all exercises are done without the participant detecting the sweet taste of the aerosol



Basic Infection Control Skills License (BICSL)

BICSL Program components:

6- Fit Test

Qualitative Fit Testing

Retest:

1. The trainer terminates the test at any time when the sweet taste of aerosol is detected by the test person
2. The trainer waits 15 minutes before performing the sensitivity test again.
3. The trainer repeats the fit test with the same respirator after re-donning and readjusting.
4. The trainer repeats the test using different size or model of respirator if a second failure with the same respirator.



Basic Infection Control Skills License (BICSL)

BICSL Program components:

6- Fit Test

Qualitative Fit Testing

After use:

1. Disinfect Fit test Hoodie after each use.
2. Clean and disinfect the outside surface of the nebulizer nozzle that is inserted into the hood after each use.



Basic Infection Control Skills License (BICSL)

BICSL Program components:

7- Powered Air Purifying Respirator (PAPR)

1. Define what is PAPR and indications of use .
2. Demonstrate PAPR assembly and check for air flow and charging.
3. Demonstrate the proper donning of the PAPR.
4. Demonstrate the proper doffing of the PAPR and disassembly.
5. Give instructions regarding cleaning and disinfections of the PAPR parts.
6. The trainer should ask any non- fit participant to demonstrate correct PAPR donning and doffing and corrects any mistakes during demonstration.



GDIPC web sit

<https://gdipc.sa/Training-Education-Department.html>



Thank You
Any Question?